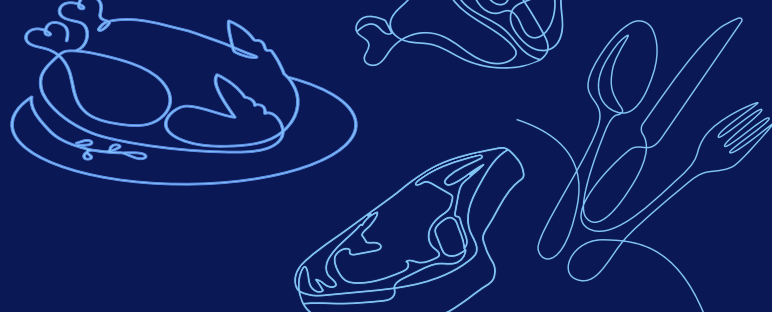




Nourishing Today
Sustaining Tomorrow

2025 Environment & the Planet



Reported data is to be for the prior calendar year. If your company chooses to deviate from the prior calendar year reporting for this focus area - to accommodate for this focus area's variety of reporting timelines due to variances with local, state, national or company reporting practices - make sure to note this internally and continue to report on the next 12 months annually.

What 12-month period are you reporting on

Resources provide information to assist in meeting the metric or to help define criteria for the metric. Resources may be a known standard, policy, practice, program, and/or recognized best practice.

Foundational Metrics (Baselines)

For the statements below, enter a number representing how many of the establishments you are reporting for that would answer "Yes". Example: If reporting for 3 establishments and all are "yes," type 3. If metric applies to 1 establishment, type 1. If none, type 0.

B1. Adheres to all applicable local, state, and federal environmental regulations (e.g., reporting obligations, inspections, response to compliance issues).

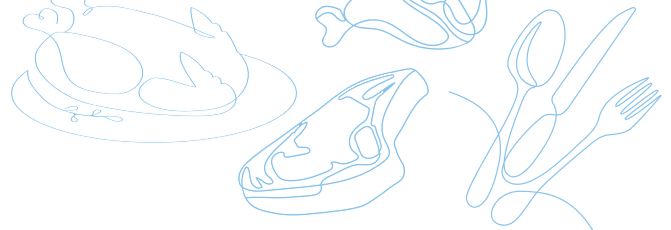
Yes: Means the establishment adheres to the regulations above. A "yes" is acceptable if your facility has a minor noncompliance (worked out without substantial fine or enforcement action). This metric seeks to confirm that your company is engaging with and responding appropriately to regulators.

B2. Holds all applicable permits (e.g., air quality, NPDES, water appropriation).

Resource:

- US Small Business Administration <https://www.sba.gov/>

B3. The establishment has a policy, program or monitoring system that ensures routine compliance with industrial or storm water permit parameters. *



Achievement

When answering these achievement metrics, to indicate “yes”, type the number of establishments for which you are reporting that are meeting the metric. Within the achievement metrics, we use a commit, track, deliver, made public framework. This framework is to show the company’s or establishment’s progression as it relates to meeting this metric and possibly going above and beyond the metric (deliver/made public).

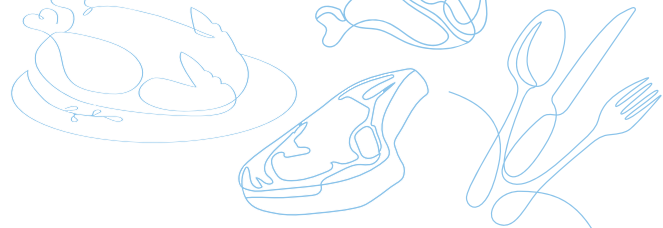
In general, across all focus areas unless clarified under the metric, the following will be your guiding definitions for commit, track, deliver, made public, not applicable, and choose not to report.

- **Commit (C)** - Means internally the company has stated a commitment to the metric.
- **Track (T)** - Means internally the company has a mechanism for measuring/recording/reporting information supporting this metric. (ex. Quantifying emissions)
- **Deliver (D)** - Means the company is meeting or making progress in line with the achievement of the internal goal(s) or commitment(s) pertinent to this metric.
Example: Are the company emissions, annual reduction amount, in line with the company goal?
- **Made Public (P)** - At the company level, information regarding this metric has been published, printed, or posted publicly displaying our commitment to this metric externally. Examples: posted on the company website; included in an ESG (Environmental, Social, and Governance) report; etc.
- **N/A (NA)** - Not Applicable
- **Not Reporting (NR)** - Choose not to report on this metric.

The question mark (?) after each metric provides guidance on how to report for each individual metric. If there is nothing specific to that metric for interpretation assistance, then the definitions of commit, track, deliver, and made public as written above prevail.

Example: If you are reporting for 3 establishments, the max number you can input is 3.

- If 3 of 3 of the establishments have committed to the metric, enter 3.
- If only 2 of 3 establishments are tracking the metric, enter 2.
- If only 1 establishment has delivered on the metric, enter 1.
- If the answer is no for all establishments reported on, enter zero.



Waste Management: Waste Generation & Disposal

Programs have been listed before goals. It's best practice to have the company baseline quantifiable metrics (KPIs) then establish a written program before creating goals to push for continuous improvement.

Note: Food waste, packaging reduction, and handling unavoidable organic waste in this section refers to product "in house" not for the products that have left the facility and are in the hands of consumers. Consumer food waste and food loss metrics are tracked *under Nutrition*.

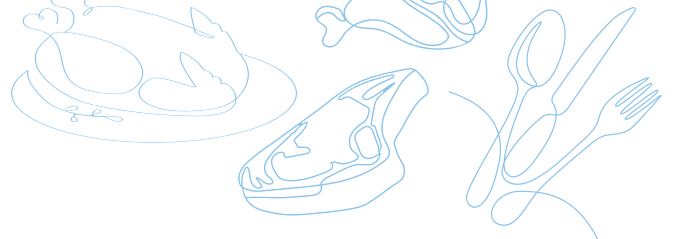
Things to consider in a solid waste program to track and include goals for:

- **Sent to disposal:** landfill or incineration without energy recovery.
 - » Global Company or Global Reporting: Suggest measuring in metric tons (MT) of waste.
 - » US Based Company: Suggest measuring in US tons.
- **Landfill diversion:** reuse, recycling, rendering, energy recovery, composting, beneficial land application, etc.
 - » Global Company or Global Reporting: Suggest measuring in metric tons (MT) of waste.
 - » US Based Company: Suggest measuring in US tons.
- **Landfilled Waste Intensity** = US tons waste sent to landfill / lbs. of product produced
 - » Note: If you don't want to commit to lbs. for denomination, you can use "weight of product produced".
- **Percentage of Waste Landfilled** = US tons waste sent to landfill / US tons total waste disposed
 - » Usually when we talk about "intensities," we are referring to per product or per weight of product produced (Option #1 above).

Note: Waste to Energy (WtE) practices are not considered "disposal" by the US EPA. WtE practices are categorized as industrial use and not to be lumped in with landfill.

General Resources for Waste Metrics A1 - A7:

- Definitions: [GRI 306: Waste \(2020\)](#);
- GRI 306: Waste 2020 [Updated Reporting Standard](#) Leaflet
- GRI 301: [Materials](#) (2016)
- UN SDG [8.4 Domestic material consumption](#)
- UN SDG [12.5 - Waste Diversion Standards](#) | UN SDG [21.5 Indicators & Targets](#)
- ReFED's Roadmap to Reduce US Food Waste by 20 Percent (2016)
https://refed.org/downloads/ReFED_Report_2016.pdf
 - » 2030 Roadmap for Manufacturers <https://refed.org/stakeholders/manufacturers/>



C	T	D	P	NA	NR
---	---	---	---	----	----

A1. A waste management program is in place to prevent waste generation when possible and manage significant impacts from waste generated.

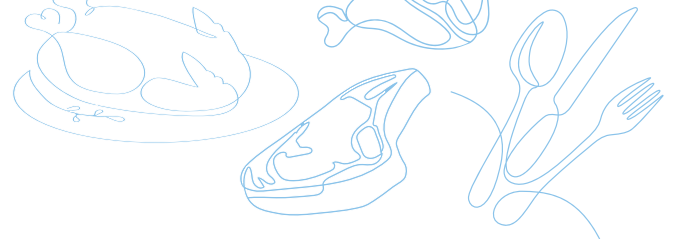
- **Commit** – Have a written program for waste management.
- **Track** – Tracking waste generated (suggest measuring by diversion rate or intensity).
- **Deliver** – Meeting or in alignment with meeting the company goal. Suggest measuring the diversion rate = waste diverted/total waste generated.

Resources:

- Food Loss and Waste Accounting and Reporting Standard (FLW Standard) <https://www.flwprotocol.org/>
 - » WRI’s Report on the FLW Standard <https://www.wri.org/research/food-loss-and-waste-accounting-and-reporting-standard>
- Circular Economy Leadership Canada <https://www.circulareconomyleaders.ca/>
 - » Circular Economy Action Plan for Canada <https://www.circulareconomysummit.ca/action-plan>

A2. A nonfood waste management program is in place to increase nonfood waste diversion and reduce nonfood waste sent to landfills.

- **Commit** – Written program for nonfood waste diversion.
- **Track** – Tracking nonfood waste disposed, diverted, and landfilled.
- **Deliver** – Meeting or in alignment with meeting the company goal. Suggest measuring the diversion rate. Equation: waste diverted / total waste generated = diversion rate.



C	T	D	P	NA	NR
---	---	---	---	----	----

A3. A food waste reduction program is in place to minimize food waste of products packaged for distribution and sale within company establishments and facilities.

WASTE-RELATED PROGRAMS

- **Commit** – Written program for food waste diversion.
- **Track** – Tracking food waste disposed, diverted, and landfilled. Establishment can track absolute volume and waste-to-landfill intensity. Facilities outside of the establishment would cover outside storage facilities owned and operated by the company.
- **Deliver** – Meeting or in alignment with meeting the company goal(s). Could measure as increase in food waste diversion; decrease in landfilled food waste; or as increase in food waste diversion rate.

Note:

- Food Loss: USDA's Economic Research Service (ERS) defines food loss as the edible amount of food, postharvest, that is available for human consumption but is not consumed for any reason. Reference [WRI Food Loss and Waste Protocol](#).
- Food donations count as food waste diversion of a product.
- Industry goal is to move up the EPA Food Recovery Hierarchy (see link below), as much as possible.

Resources:

- Food Loss and Waste Protocol <https://flwprotocol.org/>
» Look here for definitions of food loss and food waste.
- EPA Food Recovery Hierarchy <https://www.epa.gov/sustainable-management-food/food-recovery-hierarchy>
- A National Strategy to Reduce Food Waste at the Consumer Level | The National Academies Press <https://nap.nationalacademies.org/catalog/25876/a-national-strategy-to-reduce-food-waste-at-the-consumer-level>
- AMERIPEN Quantifying the Value of Packaging as a Strategy to Prevent Food Waste in America Study <https://members.ameripen.org/newsroom/Details/reducing-food-waste-181250>

A4. A goal is established to reduce the quantity of waste generated (includes source reduction).

WASTE-RELATED GOALS

Examples:

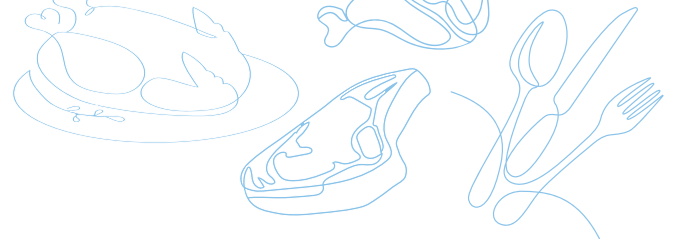
- Implement a composting program to divert organic waste from landfills, reducing overall waste production.
- Achieve a 10% reduction in overall waste production within the next year through increased recycling and composting efforts.

A5. A goal is established to increase waste diversion and/or reduce waste sent to landfill.

Examples: cardboard recycling program, repurposing food loss or waste as useable products, bio-residual program (anaerobic digestors).

Resource:

- TRUE Zero Waste to Landfill <https://www.gbci.org/about-true>



C	T	D	P	NA	NR
---	---	---	---	----	----

A6. The waste avoidance plan(s) includes a zero-waste-to-landfill goal is established.

- **Commit** - Establishment has a waste avoidance plan.
- **Track** - A6 builds on A5 with the inclusion of zero-waste-landfill goal, therefore, you cannot select track on this metric without the zero waste to landfill goal.
- **Deliver** - The plan is certified by a third party to a published standard.

Resources:

- TRUE Zero-Waste-to-Landfill <https://www.gbci.org/about-true>
 - » Green Business Certified <https://www.gbci.org/>
 - » TRUE Rating System (September 2017) <https://true.gbci.org/sites/default/files/resources/Current-Rating-System-December-2023.pdf>
- Zero Waste International Alliance <https://zwia.org/>
 - » Zero Waste USA <https://zerowasteusa.org/>
 - » Zero Waste Canada <https://www.zerowastecanada.ca/>
- SCS Zero Waste Standard <https://www.scsglobalservices.com/services/zero-waste-certification>
- NSF Landfill-Free Verification <https://www.nsf.org/testing/sustainability/circularity-waste-materials-management/landfill-free-verification>

A7. A food waste reduction goal(s) is in place.

Example: Decrease production-related food waste by 15% over the next year by optimizing manufacturing processes, improving quality control, and finding alternative uses for by-products.

Resource:

- Ellen MacArthur Foundation – Circular Economy for Food <https://www.ellenmacarthurfoundation.org/food-and-the-circular-economy-deep-dive>



Packaging (Packaged for distribution and sale)

Packaging waste accounts for 40% of all solid waste in municipal waste streams. According to EPA, commercial, residential, and institutional users generate 75 million tons of container and packaging waste each year, but only half of the waste is properly recycled. This means about 37 million tons of packaging waste finds its way into the landfill.

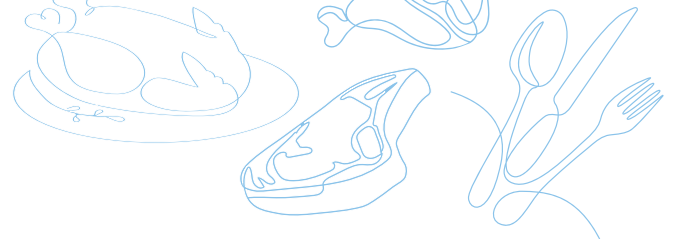
The business costs to packaging: <https://supplychain.edf.org/resources/sustainability-101-packaging-waste-the-problem/>

General Resources – Packaging Metrics (A8-A13):

- Definitions: [GRI 306: Waste \(2020\)](#)
- GRI 306: Waste 2020 [Updated Reporting Standard](#) Leaflet
- GRI 301: [Materials](#) (2016)
- [UN SDG 12.3 - Food Loss & Waste](#)
- [Compost Manufacturing Alliance](#)
- Biodegradable Products Institute ([BPI](#))
- Alliance to End Plastic Waste: Plastic Waste Management Framework <https://endplasticwaste.org/en/our-stories/plastic-waste-management-framework>
- How2Recycle Label Program <https://how2recycle.info/>

C	T	D	P	NA	NR
---	---	---	---	----	----

PACKAGING (PACKAGED FOR DISTRIBUTION AND SALE)	C T D P NA NR					
	<p>A8. A waste reduction program is in place to reduce packaging used.</p> <p>Examples: Implementing packaging volume reductions or weight reductions.</p> <p>Resources:</p> <ul style="list-style-type: none"> • AMERIPEN (the American Institute for Packaging and the Environment) Packaging Materials Management Definitions: A Review of Varying Global Standards https://members.ameripen.org/newsroom/Details/packaging-materials-management-definitions-a-review-of-varying-global-standards-181303 • Golden Design Rules for Plastic Packaging https://goldendesignrules.plasticspact.ca/ <ul style="list-style-type: none"> » Canada – led by the Canadian Plastics Pact (CPP) https://plasticspact.ca/ » Consumer Good Forum PDF – Golden Design Rules for Plastic Waste https://www.theconsumergoodsforum.com/wp-content/uploads/2023/10/2024-Plastics-All-Golden-Design-Rules-One-Pager.pdf • Ellen MacArthur Foundation – Circular Economy Plastics https://www.ellenmacarthurfoundation.org/topics/plastics/overview • Canada Plastics Pact is part of Global Pact with WWF. 					
<p>A9. A waste reduction program is in place to increase the percentage of packaging used that is recyclable.</p> <p>Example: Have company goals on using post-consumer recycled content (PCR). Resources:</p> <ul style="list-style-type: none"> • U.S. Plastics Pact https://usplasticspact.org/why-use-pcr/ • U.S. Plastics Pact Roadmap to 2025 https://usplasticspact.org/roadmap/ <p><i>Note: This metric supports diversion of packaging waste. Supports metrics A1 – A6.</i></p>						



C	T	D	P	NA	NR
---	---	---	---	----	----

A10. A waste reduction program is in place to increase the percentage of packaging used that is compostable.

Resources:

- U.S. Plastics Pact <https://usplasticspact.org/why-use-pcr/>
- U.S. Plastics Pact Roadmap to 2025 <https://usplasticspact.org/roadmap/>

Note: This metric supports diversion of packaging waste. Supports metrics A1 – A6.

A11. A waste reduction program is in place to increase the percentage of packaging used that is reusable.

Resources:

- U.S. Plastics Pact <https://usplasticspact.org/why-use-pcr/>
- U.S. Plastics Pact Roadmap to 2025 <https://usplasticspact.org/roadmap/>

Note: This metric supports diversion of packaging waste; moving from single use to reuse. Supports metrics A1 – A6.

A12. A waste reduction program is in place to increase the use of sustainable materials in the creation of packaging such as renewable, compostable, and recycled content.

Note: Supports creation of packaging that avoids the use of virgin nonrenewable materials. Renewable = biobased (nonpetroleum based)

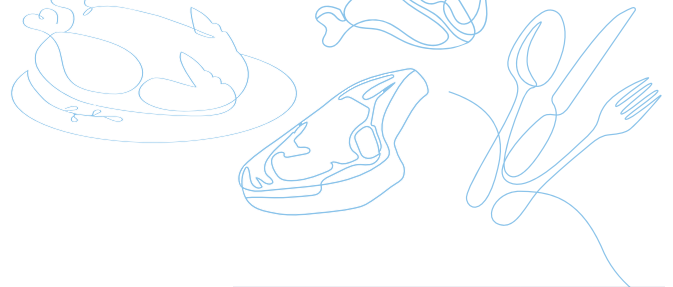
Resource:

- WWF Bioplastic Feedstock Alliance <https://bioplasticfeedstockalliance.org/>

A13. A goal is established to reduce virgin nonrenewable packaging used.

Note: Definitions to use:

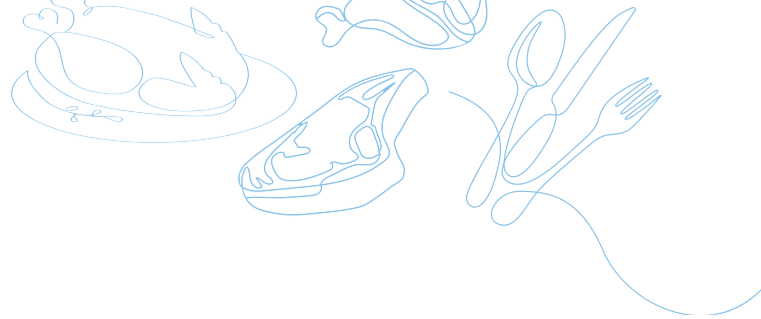
- Virgin nonrenewable is run of the mill plastic that is petroleum based.
- Non-virgin or non-renewable is something that was plastic and turned into another plastic.



Energy Use

C	T	D	P	NA	NR
---	---	---	---	----	----

ENERGY USE	<p>A14. An energy management program is in place to increase energy efficiency.</p> <ul style="list-style-type: none"> • Commit – Written program for energy efficiency. • Track – Tracking energy use/consumption and intensity. • Deliver – Increase in energy efficiency over time. <p>Resource:</p> <ul style="list-style-type: none"> • ISO 50001: Energy Management https://www.iso.org/iso-50001-energy-management.html • Build an energy management program ENERGY STAR • ENERGY STAR Energy Performance Indicators for plants ENERGY STAR 	USRSB
	<p>A15. An energy use intensity (EUI) goal(s) is established.</p> <ul style="list-style-type: none"> • Commit – The establishment has an energy use intensity baseline. • Track – Goal(s) is determined and measured by MMBtu (one million British thermal units for natural gas) or kilowatt-hours per unit of production. <p>Resource:</p> <ul style="list-style-type: none"> • EPA Green Power Markets Target Setting • Energy Tracking Tool ENERGY STAR • Energy Tracking Tool Quick Start Guide ENERGY STAR 	
	<p>A16. A program is in place to increase renewable energy use.</p> <ul style="list-style-type: none"> • Commit – The company/facility has a plan to increase renewable energy usage. • Track – The company/facility is tracking renewable energy use. • Deliver – The company/facility has increased renewable energy use over time. <p>Resources:</p> <ul style="list-style-type: none"> • GRI 302: Energy (2016) • Meat, Poultry & Dairy SASB Standard https://sasb.org/standards/ • UN SDG 13 – Climate Action 	
	<p><i>If Deliver, is marked for A16.</i></p> <p>A16a. How is the establishment/company delivering on its program to increase renewable energy use? (Please check all that apply.)</p> <ul style="list-style-type: none"> Purchasing Renewable Energy Installing Renewable Energy Trading Credits Buying Credits Selling Credits Installing Solar Installing Wind Installing Geothermal Purchasing Electric Vehicles Other 	



Greenhouse Gas (GHG) Emissions

Resources – GHG Inventory Accounting and Reporting:

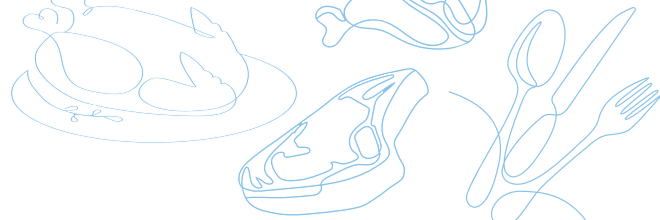
- GHG Protocol: [Corporate Standard](#), [Scope 2 Guidance](#), [Scope 3 Standard](#), [Scope 3 Calculation Guidance](#), [Agriculture Guidance](#), and [Land Sector and Removals Guidance](#)
- Meat, Poultry & Dairy SASB Standard <https://sasb.org/standards/>
- [GRI 103 \(pdf\)](#): Material Topics
- [GRI 305-4](#): Intensity
- Meat Institute Resources:
 - » Supplier LOCT (Leadership on Climate Transition) Website <https://supplierloct.com/>
 - » Join [Meat Institute Supplier LOCT Education \(Spring & Fall Courses\)](#).
- GHG Meat Inventory Tool / Case Study https://www.meatinstitute.org/Protein_PACT/GHG_Inventory_Tool

Resources – GHG Target Setting:

- [Science Based Targets Initiative \(SBTi\)](#)
- [SBTi FLAG \(Forest, Land, and Agriculture\) Guidance](#)
 - » SBTi Forest, Land and Agriculture (FLAG) Project FAQs Version 4.0 July 2023 <https://sciencebasedtargets.org/resources/files/FLAG-FAQ.pdf>
 - » Small and Medium-Sized Enterprises (SMEs) FAQs Version 5.1 December 2023 <https://sciencebasedtargets.org/resources/files/FAQs-for-SMEs.pdf>
- Greenhouse Gap Protocol [Resources Page](#) including scope 3 calculation guidance and agriculture-specific guidance.
 - » [GHG protocol calculator \(Scope 1-2\)](#)
- U.S. EPA [Target Setting Guidance](#) and Corporate [GHG Inventorying and Target Setting Self-Assessment](#).
 - » EPA Simplified GHG Emissions Calculator (Scope 1-2)
- [CDP Technical Note on Science Based Targets](#) - Applicable to companies reporting to CDP.

Resources - Net Zero

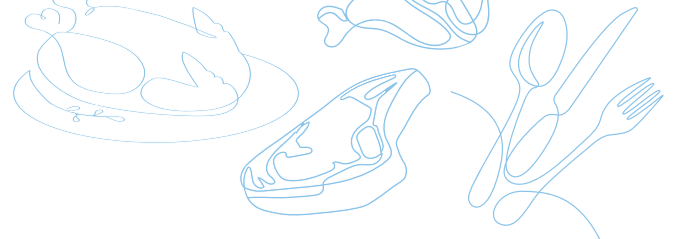
- EDF's Pathways to Net Zero: A Guide for Business <https://business.edf.org/wp-content/blogs.dir/90/files/Pathways-to-Net-ZeroFINAL-1.pdf>



For this section: If Made Public receives a value greater than zero (0) for metrics A17, A20, A21, A26, or A27, an optional text box will appear for a link or document to this information.

C	T	D	P	NA	NR
---	---	---	---	----	----

SCOPE 1 & 2 EMISSIONS	A17. Scope 1 & 2 GHG emissions data are tracked.					
	<ul style="list-style-type: none"> • Commit – Company is committed to measuring scope 1 & 2 GHG emissions data. • Track – Company is measuring GHG Intensity. Typically tracked in global standards as metric tons (MT) of CO2 equivalent per MT of production. In the US, this is often per lb. or per 1,000 lbs. of production. • Delivered – If you are tracking; you delivered. • Made Public – Emissions data is made publicly available through a credible reporting program (e.g., CDP, Sustainability/Annual Reports, customer surveys). 					
	Resource:					
	<ul style="list-style-type: none"> • Join Meat Institute Supplier LOCT Education (Spring & Fall Courses). 					
	A18. Goals are set for scope 1 & 2 GHG emissions reductions.					
	<ul style="list-style-type: none"> • Commit – An internal pledge/initiative has been developed to set scope 1 and 2 targets. • Track – Measuring our path and making corrections to attain goals set for scope 1 and 2 GHG emissions reduction goals. • Deliver – Met the goal(s) for scope 1 and 2 GHG emissions. • Made Public – GHG emissions reduction goals for scope 1 and 2 have been publicized. 					
	<i>Note: Attainment of these goals may be over time.</i>					
	A19. Scope 1 & 2 data are validated by a certified third party.					
	Think of validation like a “financial review”. It is a qualitative review of whether information sources are reliable. Validation can include SBTi and other third-party validation, as well as approval from the SBTi.					
	A20. Scope 1 & 2 target(s) are validated by a certified third party.					
Think of validation like a “financial review”. It is a qualitative review of whether information sources are reliable. Validation can include SBTi and other third-party validation, as well as approval from the SBTi.						
A21. Scope 1 & 2 data are verified by a certified third party.						
Think of verification like a “financial audit” aka assured. It is more quantitative; reviewing the accuracy of GHG data presented.						
A22. Scope 1 & 2 target(s) are verified by a certified third party.						
Think of verification like a “financial audit” aka assured. It is more quantitative; reviewing the accuracy of GHG data presented.						



C	T	D	P	NA	NR
---	---	---	---	----	----

A23. Scope 3 GHG emissions data are tracked.

Resources:

- GHG Protocol Calculation Tools and Guidance <https://ghgprotocol.org/calculation-tools-and-guidance>
 - » FAQs on GHG Protocol Calculation Tools <https://ghgprotocol.org/calculation-tools-faq>
- GHG Protocol Corporate Value Chain (Scope 3) Accounting and Reporting Standard <https://ghgprotocol.org/corporate-value-chain-scope-3-standard>
- GHG Protocol Technical Guidance for Calculating Scope 3 Emissions (version 1.0) Supplement to the Corporate Value Chain (Scope 3) Accounting & Reporting Standard https://ghgprotocol.org/sites/default/files/standards/Scope3_Calculation_Guidance_0.pdf
- Land Sector Removal Guidance <https://ghgprotocol.org/land-sector-and-removals-guidance>
- Join [Meat Institute Supplier LOCT Education](#) (Spring & Fall Courses).

A24. Goals are set for scope 3 GHG emissions reductions.

- **Commit** – An internal pledge/initiative has been developed to set scope 3 targets.
- **Track** – Measuring our path and making corrections to attain goals set for scope 3 GHG emissions reduction goals.
- **Deliver** – Met the goal for scope 3 GHG emissions.
- **Made Public** – GHG emissions reduction goals for scope 3 have been publicized.

Note: Attainment of these goals could be over time.

A25. Scope 3 data methodology is validated by a certified third party.

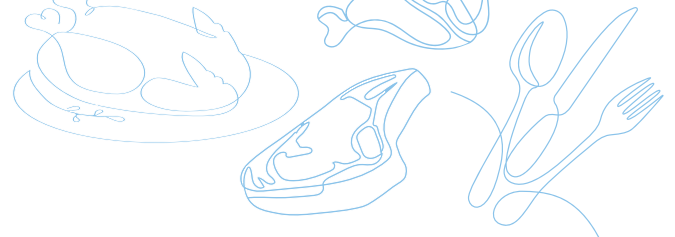
Note: Scope 3 isn't validated regularly. Validation can include SBTi and other third-party validation, AND approval from the SBTi.

A26. Scope 3 targets are validated by a certified third party.

Note: Scope 3 isn't validated regularly. Validation can include SBTi and other third-party validation, AND approval from the SBTi.

A27. Scope 3 data methodology is verified by a certified third party.

A28. Scope 3 targets are verified by a certified third party.



C	T	D	P	NA	NR
---	---	---	---	----	----

GHG TARGET SETTING	A29. A goal is in place to reduce GHG emissions.
	<ul style="list-style-type: none"> • Commit – The company/facility has a GHG reduction goal(s). • Track – Suggest tracking the following: <ul style="list-style-type: none"> » Year of baseline measurement. » Year of GHG reduction target. » Percentage number to measure the level of GHG reduction targeted. <p>Note: As a company, the company may choose this percentage number to be more than the Paris Agreement 1.5-degree reduction.</p> • Delivered – GHG targets have been approved by a certified third party to meet overall GHG reduction goal. <p>Resource:</p> <ul style="list-style-type: none"> • Join Meat Institute Supplier LOCT Cohort (Spring & Fall). Contact Kristi kblock@meatinstitute.org for details. <p style="text-align: right;">USRSB</p>
SCIENCE BASED TARGET	A30. The Company has set a Science Based Target (SBTs).
	<ul style="list-style-type: none"> • Commit – Company submits a letter establishing intent to set a science-based target. • Track – Company develops/works on an emissions reduction target in line with the SBTi’s criteria. • Deliver – Company presents their target to the SBTi for official validation. • Made Public – Company has received validation for SBTi. Announce the Company target and inform stakeholders. <p><i>Note: SBTi will require companies to set a FLAG target in addition to a corporate target.</i></p> <p>Resources:</p> <ul style="list-style-type: none"> • Science Based Targets https://sciencebasedtargets.org/ • World Resource Institute (WRI) SBTi FAQs https://www.wri.org/initiatives/science-based-targets/frequently-asked-questions

Conditional Links (designated as L above):

Optional: If the company has “Made Public” the following metrics, share the link or document to the applicable metric. Example: SBTIs Approval URL

A18a. Scope 1 & 2 GHG emissions data are tracked.

Where is this information being made public? Example: Annual Report –Gives member companies the ability to link to SBT commitments and helps Meat Institute track.

A20a. Scope 1 & 2 data is validated by a certified third party.

Link Made Public selection to a text box allowing members to put their SBTi approval link.

A21a. Scope 1 & 2 target is validated by a certified third party.

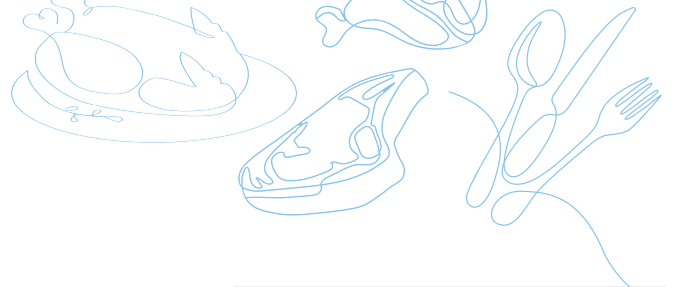
Link Made Public selection to a text box allowing members to put their SBTi approval link.

A26a. Scope 3 data is validated by a certified third party.

Link Made Public selection to a text box allowing members to put their SBTi approval link.

A27a. Scope 3 target is validated by a certified third party.

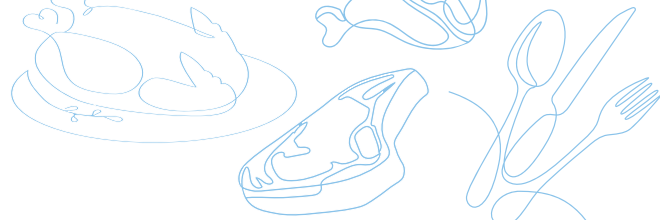
Link Made Public selection to a text box allowing members to put their SBTi approval link.



Land Use

C	T	D	P	NA	NR
---	---	---	---	----	----

LAND USE	<p>A31. A land use program is in place that includes policies to mitigate impacts on natural resources (e.g., forests, wetlands, and grasslands) for all facility construction, renovation, and/or expansion.</p> <p><i>Note: This information may be part of a permitting process (see Baselines).</i></p> <ul style="list-style-type: none"> • Commit – Company is committed to creating a land use program that includes policies to mitigate impacts on natural resources for all facility construction, renovation, and/or expansion. • Track – Company has a land use program in place that includes policies to mitigate impacts on natural resources for all facility construction, renovation, and/or expansion. • Deliver – Company has a land use program in place for company owned facilities that includes policies to mitigate impacts on natural resources for all facility construction, renovation, and/or expansion and tracks the area of land that: <ul style="list-style-type: none"> » is protected or restored, including riparian areas; » under conservation practices; » used for production. <p>Resources:</p> <ul style="list-style-type: none"> • USRSB Packer & Processor Toolkit 2023 visit page 21 https://www.usrsb.org/resources • Carbon Disclosure Project https://www.cdp.net/en/info/about-us
	<p>A32. A land use program or policy is in place that includes policies to address land conversion.</p> <p>Resource:</p> <ul style="list-style-type: none"> • Accountability Framework: Deforestation- and conversion-free supply chains and land use change emissions



Supplier Commitments

C	T	D	P	NA	NR
---	---	---	---	----	----

SUPPLY CHAIN ACTIVITIES & SUPPLIER COMMITMENTS

A33. The company engages in supply chain projects in North America to encourage implementation of practices that reduce GHG emissions in the supply chain.

Example: This could include participation in a climate smart activity for crop production and/or livestock management.

Resources:

- [Climate Smart Ag](#)
- [UN SDG 15](#) – Life on Land
- [UN SDG 17](#) – Partnerships for the Goals

A34. Supplier or procurement programs are implemented to assess the environmental impacts.

Note: If this is an assessment or report completed from headquarters across all facilities, the report will be the number for all establishments or for no establishment (zero) as it applies across commit, track, deliver.

Resources:

- GRI 308-1; 308-2: [Supplier Environmental Assessment](#) (2016)
- [UN SDG 12](#) – Responsible Consumption and Production

A35. Supplier approval is partially based on the suppliers' demonstrated effort in taking steps to improve environmental impacts.

Resources:

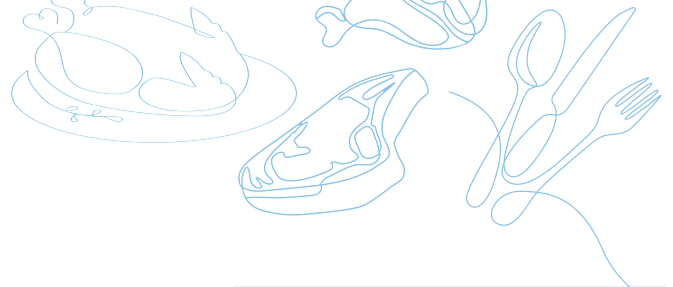
- [GRI 308-1; 308-2](#)
- [UN SDG 12](#) – Responsible Consumption and Production
- Meat, Poultry & Dairy SASB Standard <https://sasb.org/standards/>

A36. A land use program or policy for suppliers is in place that includes policies to address land conversion and/or deforestation.

Note: If this is an assessment or report completed from headquarters/corporate across all facilities, the report will be the number for all establishments or for no establishment (zero) as it applies across commit, track, deliver.

Resources:

- Accountability Framework: Deforestation- and conversion-free supply chains and land use change emissions <https://accountability-framework.org/resources/>
- Beef Roadmap: Consumer Goods Forum – Forest Positive Coalition of Action <https://www.theconsumergoodsforum.com/wp-content/uploads/2022/02/CGF-FPC-Beef-Roadmap-EN.pdf>
- US Roundtable for Sustainable Beef (USRSB) Framework: Does the company have initiatives and/or explore opportunities to mitigate land and biodiversity impacts from new facility developments? <https://www.usrsb.org/resources>
- SBTi Framework: Deforestation is a risk for animal feed supply chains, and zero deforestation commitments are a requirement for FLAG target setting. <https://sciencebasedtargets.org/sectors/forest-land-and-agriculture>



Water & Effluents Management

C	T	D	P	NA	NR
---	---	---	---	----	----

A37. A water use (quantity) program is in place.

Best Practice: Program includes establishment baselines for overall volume and intensity of wastewater discharge. It has goals to reduce the total water used. Incorporates goals or plans on recapture and reuse.

- **Commit** – Have a written program for water reduction.
- **Track** – Tracking water use intensity.
- **Deliver** – Meeting the internal goals measured by intensity as defined by source in the written water use program.

Example: Include establishing baselines for overall volume and intensity of wastewater discharge reducing the total water used (referring to recapture and reuse).

Resources:

- EPA Compliance Inspection Manual for National Pollutant Discharge Elimination System (NPDES) <https://www.epa.gov/compliance/compliance-inspection-manual-national-pollutant-discharge-elimination-system>
- EPA NPDES Industrial Stormwater Guidance <https://www.epa.gov/npdes/industrial-stormwater-guidance>
 - » Industrial Stormwater Monitoring and Sampling Guide (April 2021) https://www.epa.gov/sites/default/files/2015-11/documents/msgp_monitoring_guide.pdf
 - » Stormwater Discharges from Industrial Activities-Fact Sheets and Guidance <https://www.epa.gov/npdes/stormwater-discharges-industrial-activities-fact-sheets-and-guidance>
- Meat, Poultry & Dairy SASB Standard <https://sasb.org/standards/>

A38. A water quality program is in place.

Note: Metric refers to wastewater discharge control and the like.

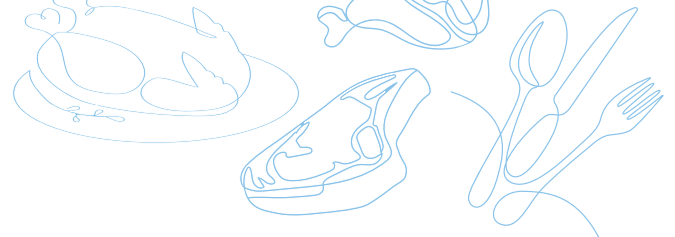
- **Commit** – Written program to proactively improve water quality coming into an establishment and discharged from an establishment.
- **Track** – Tracking water quality in routine compliance. This could include wastewater discharge intensity.
- **Deliver** – This could be reducing wastewater contaminants as it pertains to your plant (e.g. the Biological Oxygen Demand (BOD) Chemical Oxygen Demand (COD), total suspended solids (TSS) or other nutrients)

Example: A water quality program for a pork slaughter and processing facility would include discharge levels of pollutants/contaminants like ammonia, phosphorus, nitrogen, and suspended solids. There would also be an associated policy that promotes improvements in these areas. Improvements could come from pre-discharge treatment on-site or other water quality mitigation strategies that reduce nutrient and pollutant load in discharged wastewater.

Resources:

- [UN SDG 6](#) – Clean Water & Sanitation

USRSB



C	T	D	P	NA	NR
---	---	---	---	----	----

A39. A water use goal is established with reduction goals by source.

Management refers to water coming in and out of the facility. Water sources to consider include surface water, ground water, and third-party (municipal) water. Other program criteria to consider may be how you are minimizing withdrawal from areas with water stress.

Resources:

- » [GRI 303-1](#) (all water)
- » [GRI 303-2](#) (from water stressed areas)
- » Meat, Poultry & Dairy SASB Standard <https://sasb.org/standards/>
- » [WBCSD Resource Use](#)
- » [WRI Water Risk Atlas \(baseline water stress by region\)](#)
- » [UN SDG 6 – Clean Water & Sanitation](#)
- » CDP – Water Security [2023 Reporting Guidance](#)
- » Climate Disclosure Standards Board (CDSB) Framework: [Application guidance for water-related disclosures](#)
- » UN Global Compact [Water Resilience Coalition](#)

A40. A water risk assessment has been completed for your operations.

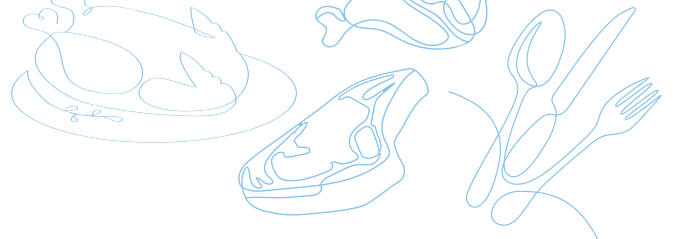
Note: This is based on your region of operation. The water risk could be too much or not enough.

- **Commit** – There is a commitment to having a watershed-based risk assessment completed.
- **Track** – Completed the watershed-based risk assessment.
- **Deliver** – For establishments in a stressed water area, implementing a contextually relevant water stewardship plan.
- **Made Public** – Report annual water use through a regulatory body, ESG reporting, etc.

Example: A Water Risk Assessment (WRA) is conducted by a third party to determine the particular water risk profile of an operation/business based on geographic location and local/regional watershed. Potential risk factors include water stress and depletion, drought or flood risks, and ecosystem effects. A WRA should look at both upstream and downstream risks, indicating both water usage and water discharge risks.

Resources:

- GRI 303: Water and Effluents (2018) <https://www.globalreporting.org/pdf.ashx?id=12488>
- Meat, Poultry & Dairy SASB Standard <https://sasb.org/standards/>
- [UN SDG 6 – Clean Water & Sanitation](#)
- WWF [Water Risk Filter Map](#)
- WRI [Water Risk Atlas](#) (baseline water stress by region)
- CDP – [Water Hub](#)
- Alliance for Water Stewardship ([AWS Standard 2.0 & Guidance Doc.](#))
 - » [AWS Certification](#)
 - » Alliance for Water Stewardship (a4ws.org)



C	T	D	P	NA	NR
---	---	---	---	----	----

WATER & EFFLUENTS GOALS	A41. A water use (quantity) goal is in place.
	Example: This could be a goal at an enterprise level, watershed, or establishment.
	Resources:
	<ul style="list-style-type: none"> EPA: Lean & Water Toolkit: Chapter 2 Water Use and Water Waste at Industrial Facilities EPA: Water Resilience - Chemical Suppliers and Manufacturers Locator Tool EPA: Water Reuse for Industrial Applications Resources
	A42. A water quality goal is in place.
	Example: This could be a goal at an enterprise level, watershed, or establishment.
	Resources:
	<ul style="list-style-type: none"> EPA: Water Quality Standards: Regulations and Resources <ul style="list-style-type: none"> » Water Quality Standards Academy – Support Development of Water Quality Standards GRI 303: Water and Effluents (2018) GRI 306: Waste 2020 Meat, Poultry & Dairy SASB Standard

Environmental Management Systems (EMS)

C	T	D	P	NA	NR
---	---	---	---	----	----

ENVIRONMENTAL MANAGEMENT SYSTEMS	A43. Established an EMS. *
	<ul style="list-style-type: none"> Commit – Exploring/developing an EMS to manage the Company and/or the establishment’s environmental footprint. Track- Conducts an annual review of compliance obligations. Deliver – Building on lessons learned from an audit conducted by an independent accredited organization. Made Public – The Company publicly reports third-party audit results.
	Resources:
	<ul style="list-style-type: none"> EPA Environmental Management Systems https://www.epa.gov/ems ISO - ISO 14001 and related standards – Environmental management



General Resources

- Meat Institute's Environmental Page & Committee <https://meatinstitute.org/Environment>
- [Meat Institute's Environmental Awards](#)
- Join [Meat Institute Supplier LOCT Education](#) (Spring & Fall Courses).
- US Roundtable for Sustainable Beef (USRSB) Packer Processor Toolkit <https://www.usrsb.org/resources>
- EPA's Green Chill Program - Any applicability to meat industry (those with retail counters) <https://www.epa.gov/greenchill/greenchill-resources-and-reports>
- US DOE Better Building Challenge <https://betterbuildingsolutioncenter.energy.gov/>

* New metric in 2024. Will not have longitudinal data before this year.

2024 to 2025 Metric Updates

- Resource Links

2023 to 2024 Metric Updates

B1. Added clarifying language about minor noncompliance (worked out without substantial fine or enforcement action)

B3. Removed from baselines and added to achievements. New table EMS very end of document.

A4. A goal is established to reduce the quantity of waste generated (includes source reduction). Added the underlined verbiage to better clarify.

A6. Defined commit, track, deliver. Deliver is now the 2023 A8. Metric.

A32, A33, A34. Removed (see below)

A32. The Company is considering SBT targets in the next 1-2 years.

A33. The Company is considering SBT targets in the next 3-5 years.

A34. The Company has no plans of setting SBT targets. A39. Added the underlined word. Supplier approval is partially based on the suppliers' demonstrated effort in taking steps to improve environmental impacts.

A44. Changes to Track & Deliver for alignment with USRSPE.

- From
 - » **Track** – Steps taken to complete the watershed-based risk assessment.
 - » **Deliver** – means the act of completing the assessment has occurred.
- To
 - » **Track** – Completed the watershed-based risk assessment.
 - » **Deliver** – For establishments in a stressed water area, implementing a contextually relevant water stewardship plan.
 - » Adding **Made Public** – Report annual water use through a regulatory body, ESG reporting, etc.
 - » Resource additions for metric alignment: World Resources Institute Aqueduct Tool Platform or World Wildlife Fund Water Risk Filter.

A47. Removing A47. A goal is established to improve wastewater quality.

Task force felt like this was already part of A46. The water quality goal is in place.

Removed Resources :

- UN SDG 13 – Climate Action UN SDG Indicators provide guidance on target setting and metrics to track at the country level. They are not very relevant to packers/processors.
- GHG Protocol Value Chain Calculator – Discontinued in 2023
- FAIRR Resources discontinued
 - » FAIRR: Best Practice: Water Use & Scarcity in Facilities
 - » FAIRR Best Practice: Scope 1 & 2 Target
 - » FAIRR Best Practice: Scope 3 Target