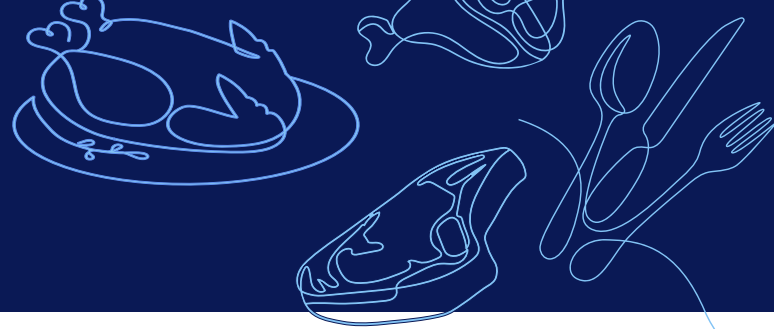




Nourishing Today
Sustaining Tomorrow

2026 Worker Safety Metrics & Guidance



Instructions:

- Select *Yes*, *No*, or *Not Reporting* for each metric. If *Yes*, select which establishment(s) the “*Yes*” is applicable to by checking the box next to each establishment id.
- Report data for the prior calendar year.
- In the reporting portal, the question mark (?) after each metric provides interpretation guidance, best practices, and applicable resources.

1. Are ALL new employees completing safety training AND on-boarding appropriate for their job function prior to starting their job?

Example: Training could cover ergonomic functions; saw or knife training; Power Industrial Trucks (PIT), etc.

| Yes | No | Not Reporting |
|--------------------------------------|----|---------------|
| <i>If yes, list USDA ID(s) below</i> | | |

2. Do employees & supervisors receive continued safety training, including training in hazard recognition, appropriate for their job function?

Example: Training could cover ergonomic functions; saw or knife training; Power Industrial Trucks (PIT), etc.

Resources:

- OSHA Resource:
 - » OSHA [Hazard Identification Training Tool](#)
 - » [Outreach Training Program](#) (OSHA 10-Hour & 30-Hour Cards)
- CCOHS Resources:
 - » Prevention and Control of Hazards [Fact Sheets](#)
 - » Effective Workplace Inspections [Website](#)
 - » Each province and territory has its own regulations and training requirements. Check with the specific occupational health and safety authority in the province or territory where you operate. Examples: Alberta Labour, The Ontario Ministry of Labour, British Columbia – [WorkSafeBC](#)

| Yes | No | Not Reporting |
|--------------------------------------|----|---------------|
| <i>If yes, list USDA ID(s) below</i> | | |



3. Is there an established safety committee or team with worker representatives meeting regularly?

Best practice:

- Safety committee or team meets monthly or every other week of the year. Participation on the safety committee or team includes representation from all levels of the organization and across functions/roles of the organization.

Resources:

- OSHA Resource:
 - » Safety and Health Programs in the States (2016) [White Paper](#)
 - » Safe & Sound at Work: [Worker Participation PDF](#)
- CCOHS Resources:
 - » Health & Safety Committee [Fact Sheets](#)

| Yes | No | Not Reporting |
|--------------------------------------|----|---------------|
| <i>If yes, list USDA ID(s) below</i> | | |
| | | |

4. Is injury data analyzed at least annually AND used to set company goals?

Example: Company has a data dashboard that feeds the information to quantified hazards and how to do something actionable that will support the goals of reducing lacerations by 10%, completing a (number) of PPE walk throughs, and holding (number) of knife trainings per quarter or per shift per year. Then, as a company, are you taking the data and moving as a company to fix shortcomings and continue to improve on what you are doing good?

Resources:

- OSHA Resource:
 - » OSHA [Near Miss Reporting Policy Template](#)
 - » Recommended Practices for Safety & Health Programs – [Program Evaluation and Improvement](#)
- CCOHS Resources:
 - » Designing an Effective PPE Program [Website](#)
 - » Return to Work – [Job Demands Analysis](#)
 - » Job Safety Analysis Made Simple [Website](#)

| Yes | No | Not Reporting |
|--------------------------------------|----|---------------|
| <i>If yes, list USDA ID(s) below</i> | | |
| | | |



5. Are hourly employees encouraged to report safety incidents, as demonstrated by a written policy that is communicated to employees and provides avenues that employees can communicate to and feel encouraged to do without retaliation or discrimination?

Resources:

- OSHA Resources:
 - » Recommended Practices for Safety & Health Programs – [Worker Participation](#)
 - » Recommended Practices for Safety & Health Programs – [Management Leadership](#)
 - » Safety Management – [Additional Resources](#)
 - [Recommended Practices for Anti-Retaliation Programs](#) - Provides recommendations and guidelines for preventing and addressing worker retaliation. OSHA Directorate of Whistleblower Protection Programs, 2017.
 - [Safety Leadership: Engaging Employees in Process Safety](#) - Discusses worker engagement in process safety. NSC Safety and Health Magazine, 2013.

| Yes | No | Not Reporting |
|--------------------------------------|----|---------------|
| <i>If yes, list USDA ID(s) below</i> | | |
| | | |

6. What is the Total Reportable Incident Rate (TRIR) at the establishment?


TRIR = (Total Number of Recordable Incidents x200,000) / total hours worked by all employees

7. What is the Days Away, Restricted, and Transfer (DART) case rate for the establishment?

DART Rate = (Total Number of DART incidents x 200,000) / Total employee hours worked

Resource:

- OSHA [Establishment Specific Injury & Illness Data](#)

 **Industry Target:** By 2030, Reducing TRIR by 50% from 2019 Baseline.

Additional Worker Safety Resources

- Meat Institute's [Worker Safety Webpage & Committee Info](#)
- Meat Institute & 2025 FSIS [Line Speed Recommendations](#)
- Meat Institute Safety Events <https://www.meatinstitute.org/Events>
- Meat & Poultry [Foundation](#)
- OSHA [Website](#)
- OSHA Small Business [Website](#)
- Canadian Center for Occupational Health & Safety [Website](#)
- Safe & Sound Program [Website](#)
- National Safety Council [Website](#)
- Canada Safety Council [Website](#)