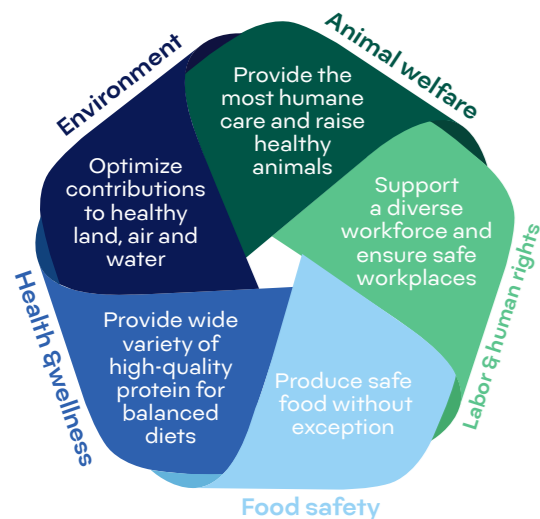




For the People, Animals & Climate of Tomorrow



By 2030, 100% of Meat Institute members will be reporting on all metrics

Today*
84 companies reported data

- 83% of companies with more than 2000 employees
- 55% of companies with at least 200 employees

95% of Meat Institute Executive Board



77% of full Meat Institute Board membership submitted data, committed to submit data, or are sponsoring



*Data updated September 2024

Optimizing contributions to healthy land, air, water

The Meat Institute will support 100% of members to reduce impacts on climate, land, air, and water, and increase transparency consistent with global science-based practices.

Today

- 26 Meat Institute members have publicly committed to and/or set targets through the Science-Based Targets Initiative
- 40 member companies completed or are enrolled in emissions measurement, disclosure, and abatement training through Suppliers Leading on Climate Transition

62% of reporting facilities are covered by a company commitment to **reduce greenhouse gas emissions**

51% of reporting facilities are covered by a **scope 1 and 2 emissions reduction** target that is verified by a third party

59% of reporting facilities are covered by a company commitment to **reduce scope 3 emissions**

48% of reporting facilities are covered by a **scope 3 emissions reduction** target that is verified by a third party



Providing the best animal care & raising healthy animals

By 2025, 100% of Meat Institute members who handle animals will pass third-party animal transport and handling audits, and 100% of members will require all suppliers to implement mandatory employee training and follow species-specific standards for animal care



Today

79% of establishments that handle live animals have a **comprehensive animal welfare program**

77% of establishments that handle live animals pass third-party **animal handling audits**, at minimum annually



Supporting a diverse workforce & ensuring safe workspaces

We will further reduce workplace injuries by 50% by 2030 (2019 baseline), on top of the 75% reduction achieved from 1999 to 2019

Today

92% of establishments have a **written worker safety program** in place

91% of establishments have **safety on-boarding** and **continuing safety training**



Producing safe food without exception

Food safety is not a target - it is our culture



Today

89% of establishments have a **multidisciplinary food safety team**

89% of establishments have embedded **food safety** into the **company culture** through communications and initiatives

Providing a variety of high-quality protein for balanced diets

Working with the U.S. Department of Agriculture and Feeding America, we will measure and help fill the protein gap by 2025 to ensure families in need have enough high-quality protein

Today

76% of reporting companies make donations to **food banks and/or other charities**

Meat Institute members donate **tens of millions of dollars and meals** to food banks and charities across the country every year





Implementing Tools

2024 Continuous Improvement Report

